



**water & sanitation**

Department:  
Water and Sanitation  
**REPUBLIC OF SOUTH AFRICA**



# Department of Water & Sanitation: BERG RIVER: WATER RESOURCE CLASSES AND RESOURCE QUALITY OBJECTIVES

Presented by:

Derril Daniels

Institutional Management: Berg-Olifants Proto CMA

Co-drafted by Ms T Torsch

17 NOVEMBER 2016

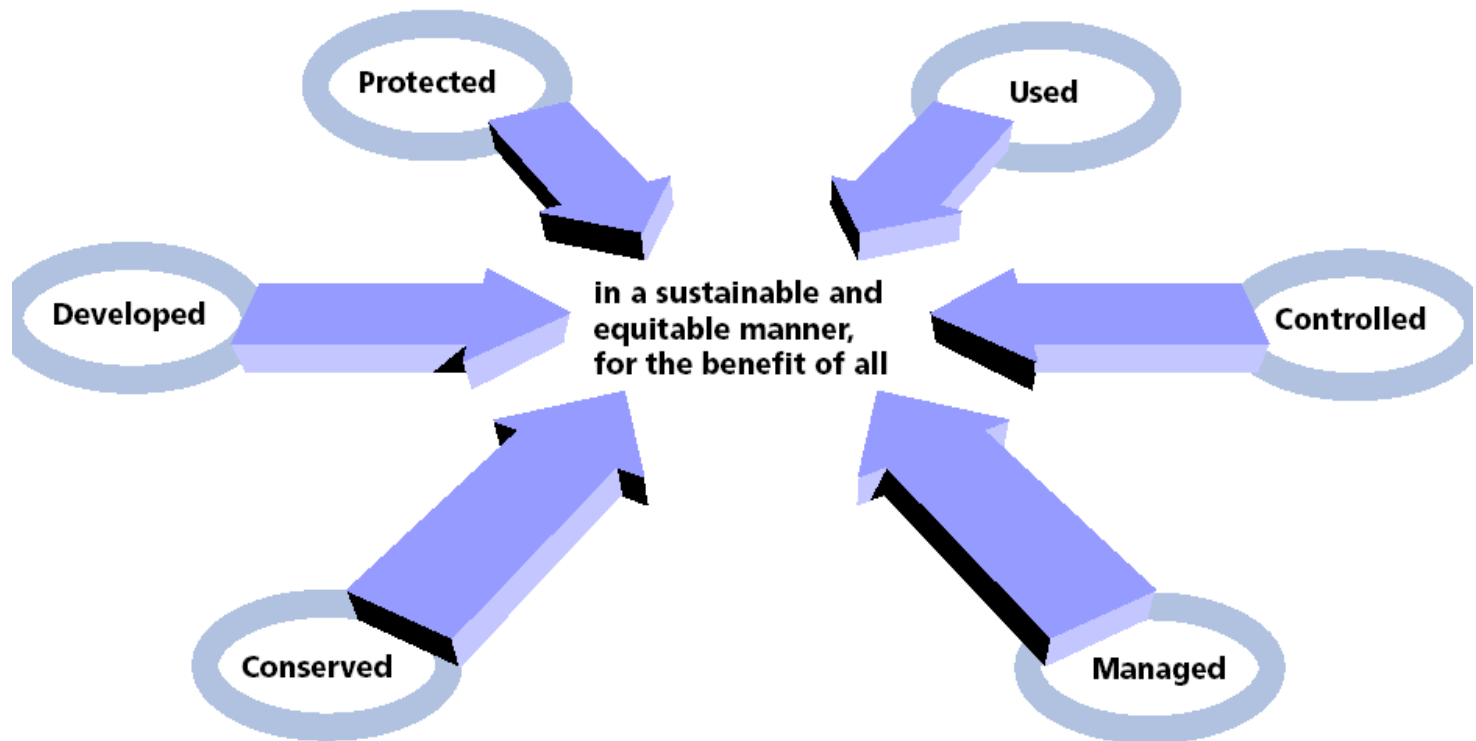
# Presentation Outline

- The governing legislation
- The Uses & Authorizations
- DWS / CMAs link to RQOs

# DWS: Two Legislations

- National Water Act, 1998 (Act 36 of 1998)
- Water Services Act, 1997 (Act 108 of 1997)

The purpose of the National Water Act is to ensure that the nations water resources are:





# We all live downstream from each other

## USERS

Dictating the receiving water quality requirements



Agriculture



Industry



Recreation



Domestic



Aquatic ecosystem

## USES

Potentially impacting on the water resource



S21(a)

Taking water from a resource



S21(c)

Impeding or diverting the flow of water in a watercourse



S21(f)

Discharging waste or water containing waste into a water resource



S21(j)

Removing, discharging or disposing of water found underground



S21(d)

Engaging in a streamflow reduction activity



S21(g)

Disposing of waste in a manner which may detrimentally impact on a water resource



S21(b)

Storing water



S21(e)

Engaging in a controlled activity



S21(i)

Altering the bed, banks, course or characteristics of a watercourse



S21(k)

Using water for recreational purposes



S21(h)

Disposing in any manner of water which contains waste from, or which has been heated in, any industrial or power generation process

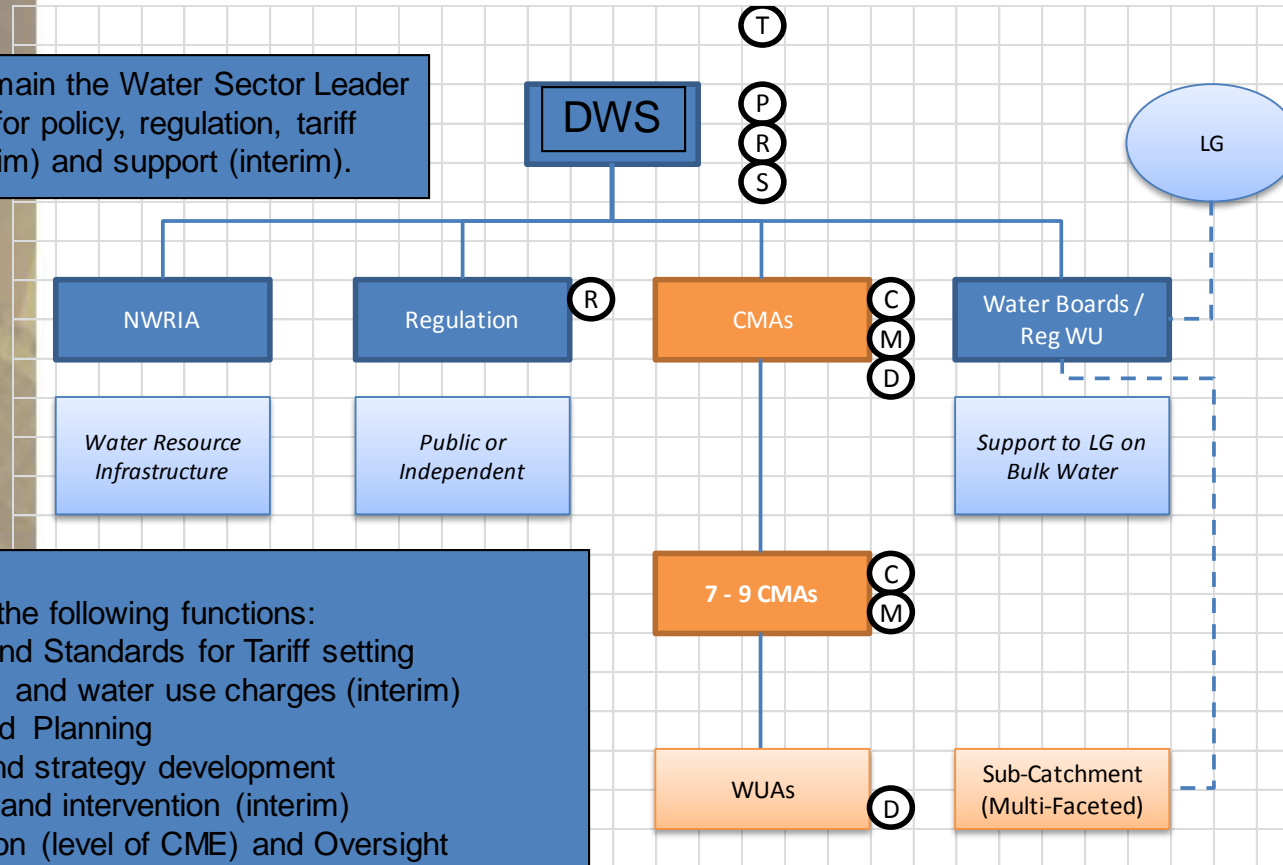
The National Water Act, 1998 (Act 36 of 1998)

# Permissible water use

- Section 22:
  - 22.(1)(a) without a licence:
    - Schedule 1
    - Existing lawful use
    - General Authorization
  - 22.(2)(b) if authorized through a Water Use licence of the NWA
  - 22.(3) if the Responsible Authority dispense with the requirements of a licence (purpose of Act are met through another Department's Authorization)
  - 22.(4) co-operative governance: the responsible Authority may promote arrangements with other organs of state to combine their requirements for an Authorization into one single licence

# Strategic View

DWS will remain the Water Sector Leader responsible for policy, regulation, tariff setting (interim) and support (interim).



DWS retain the following functions:

- Norms and Standards for Tariff setting and water use charges (interim)
- Integrated Planning
- Policy and strategy development
- Support and intervention (interim)
- Regulation (level of CME) and Oversight

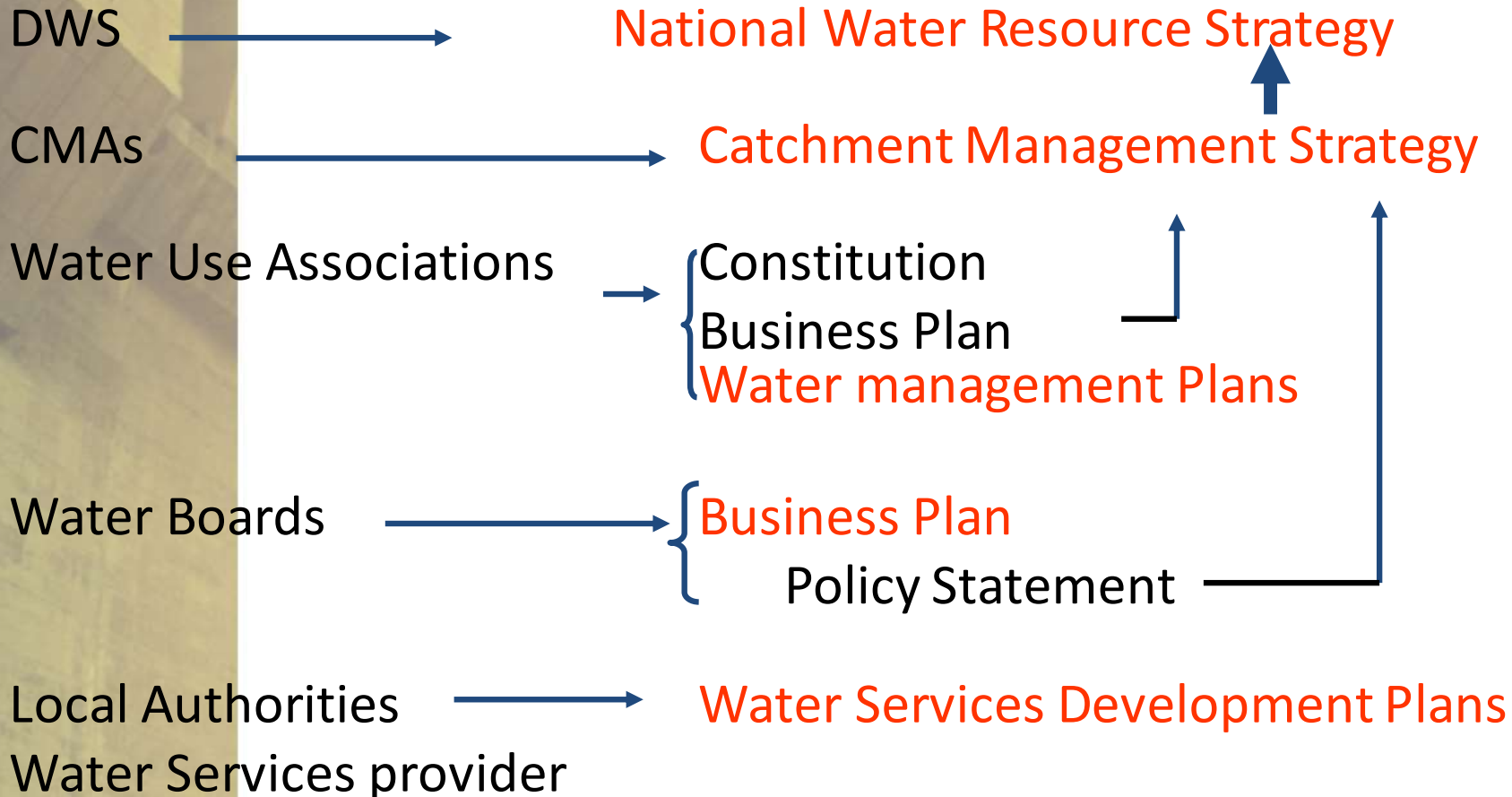
\* T= tariff, P= integrated planning, R= regulation, S= strategy and policy development



# Overview of Strategies

## Institution

## Strategies (Responsibility)





# DWS: National Water Resource Strategy

The NWRS will give guidance relating to the protection, use, development, **conservation**, management and control of water resources.

The NWRS must:

- establish water management areas
- contain a water balance for each water management area
- provide for at least the requirements of the reserve
- set out actions to reconcile requirements and resources
- set up principles regarding WC/WDM
- determine the inter-relationships between institutions

# Catchment Management Strategies

A catchment management strategy must set principles for allocating water to existing and prospective users,

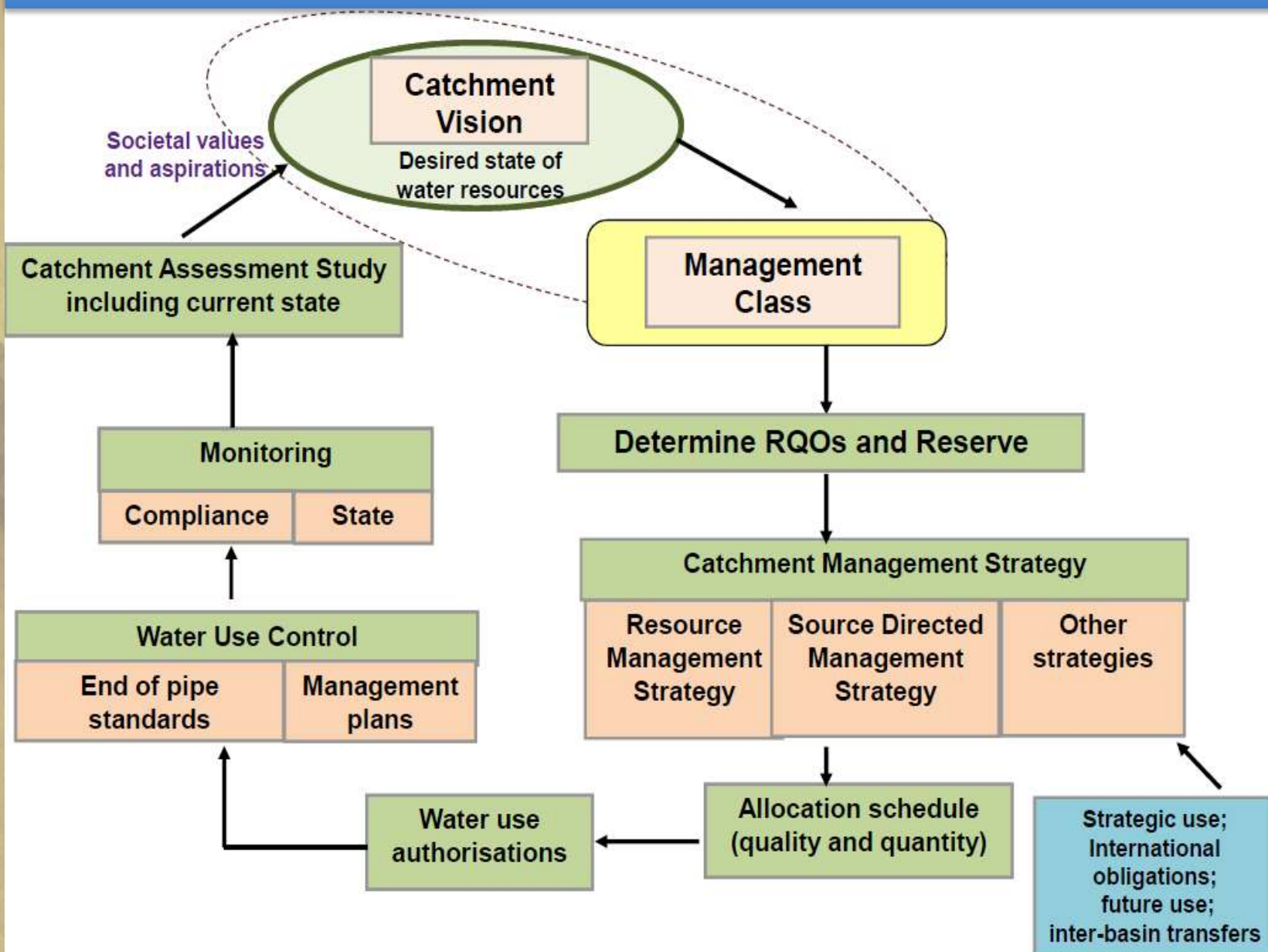
The catchment management strategy:

- set out the strategies,..for the protection, use development, **conservation**, management and control of water resources
- contain water allocation plans
- enable the public to participate
- set out the institutions to be established

# THE CLASSIFICATION SYSTEM

- All water resources must be able to sustain their use.  
*Constitutional requirement for sustainable development.*
- The National Water Act (Act No. 36 of 1998) introduces measures to protect water resources [ Chapter 3]:
  - The WRCS,
  - Reserve, and
  - Resource Quality Objectives
    - Collectively referred to as Resource Directed Measures – Set objectives for the desired condition of water resources.
- Important that RDM are technically sound, scientifically credible, practical and economical.

# THE BIGGER PICTURE







# The End

# Functions

	Function	DWS	CMA
1	Develop Policy & Strategy	Will remain a DWS function DWS will continue to <ul style="list-style-type: none"> <li>- Develop legislation, methodology &amp; guidelines for WRM,</li> <li>- Develop NWRS, Pricing Strategy &amp; Institutional Roles &amp; Responsibility policies,</li> <li>- Determine water resource class as well as the Reserve and RQOs</li> </ul>	CMA will provide input <ul style="list-style-type: none"> <li>- DWS may delegate the determination of the Reserve &amp; RQOs to the CMA for Non National significant resources</li> </ul>
2	Regulate Water Use	<ul style="list-style-type: none"> <li>- Authorization and allocation of water for strategic purpose;</li> <li>- Inter-WMA transfers</li> <li>- Where the CMA is the proposed Water Users</li> </ul>	<ul style="list-style-type: none"> <li>- Only a fully functional CMA will perform most of the functions relating to authorization and enforcing water use</li> </ul>
3	Establish, Support & Regulate Institutions	<ul style="list-style-type: none"> <li>- establish, support &amp; regulate CMAs, WUA that manage government waterworks or have a government guaranteed loan, &amp;</li> <li>- Any national body such as TCTA &amp; WRC</li> </ul>	<ul style="list-style-type: none"> <li>- Establish, Regulate and support WMI with no government waterworks or no government guaranteed loan;</li> <li>- Coordinate water related activities of Institutions &amp; Ensure Community participation in WRM</li> </ul>
4	Monitoring & planning	<ul style="list-style-type: none"> <li>- National Monitoring Systems</li> </ul>	<ul style="list-style-type: none"> <li>- Drought rules</li> <li>- Resource rehabilitation &amp; emergency intervention</li> </ul>
5	Infrastructure	DWS function <ul style="list-style-type: none"> <li>- responsible for dam safety regulation</li> </ul>	<ul style="list-style-type: none"> <li>- Monitoring infrastructure as part of its core function</li> </ul>